

EMCON (Electromagnetic Control) Policies and Control of the EM Spectrum

EMCON Policies are developed to ensure proper use of the Electromagnetic Spectrum in order to prevent or reduce an enemies effectiveness, while protecting allied forces. Since the introduction of cell phones and Wi-Fi, the Electromagnetic Environment (EM) is busier than ever. Militaries must be extremely disciplined manipulating the spectrum to successfully complete missions at home or abroad.



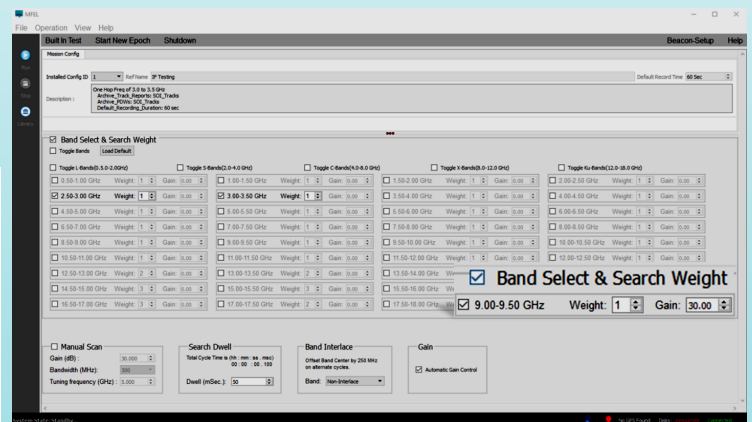
D-TA Systems MFEL-1000 is a highly effective, low-cost tool capable of EMCON monitoring during military exercises. The MFEL-1000 is capable of sensing from 2-18 GHz at 500MHz IBW, can be easily installed on an ATV, van, container or trailer as shown on the left.



In May 2023, D-TA Systems was invited to attend Northern Edge 2023 (NE-23) in Fairbanks Alaska. D-TA's Mission, was to demonstrate the capabilities of the MFEL-1000 to perform Pulse Descriptor Word (PDW) Data Collection. Over five-days, the MFEL-1000 system proved to be more than capable of handling the tasks assigned. The signals of interest (SOIs) were collected into tracks, demonstrating the times the signals were active, Min/Max & Avg. powers observed during the track, and the number of pulses which created the tracks. Staff noted how extremely user friendly the MFEL User Interface (UI) was to operate when creating missions.

If you would like to discuss the a potential demonstration of D-TA's spectrum sensing capabilities, please contact us at sales@d-ta.com.

For more information on D-TA's EM Sensing capabilities, visit us at www.d-ta.com/sigint/ and download our MFEL—Multi-Function ELINT/ESM Systems Products brochure.



For more information on all of D-TA's Electro-Magnetic Spectrum Operations (EMSO) solutions, visit us at www.d-ta.com or contact us at sales@d-ta.com.