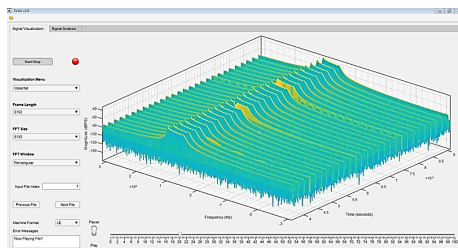


D-TA's Multi-function R-ESM/ELINT Solutions

D-TA's MFEL family of ELINT/ESM products offer 360-deg situational awareness, fast threat detection, bearing estimation, classification and identification. In addition, they offer high-fidelity ELINT collection.

D-TA's MFEL family of products include: MFEL-1000, a compact and low-cost situational awareness solution for detecting and collecting low probability intercept (LPI) signal; MFEL-5000 GSN ELINT system for ground and naval deployments. This system includes an OMNI antenna and a Spinning DF antenna to provide high bearing accuracy and high sensitivity; and MFEL-5000 UAS lightweight and low-power system for deployments in manned and unmanned aircrafts and for ground mobile and man-portable applications.

D-TA's Signal Visualization & Analysis Software (SVAS) program (seen below) allows for the baseband data retrieval, visualization, and advanced signal processing for the recorded baseband I/Q data on the D-TA server.



MFEL Deployment Concepts



Onboard UAV



Soldier-portable



Passive Sensing Shelter for Coastal Surveillance

D-TA Systems Inc.

2500 Lancaster Rd.
Ottawa, ON, Canada
K1B 4S5

Phone: 613-745-8713
Fax: 613-745-1429
E-mail: sales@d-ta.com



R-ESM/ELINT Solutions for Any Platform

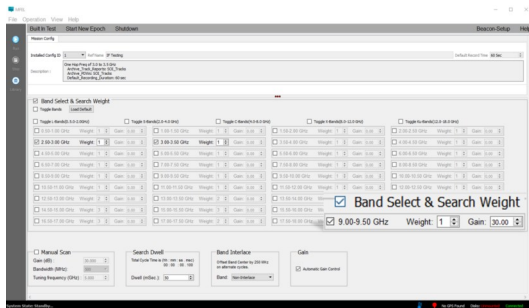
- Air (UAV, Fixed Wing)
- Ground (Fixed/Mobile)
- Naval Surface



MFEL-1000 (ELINT, EMCON Monitoring)

Features:

- OMNI Antenna or Dual-Ridged Horn (Opt.)
- 0.5-18 GHz Coverage (40 GHz Opt.)
- 360° Field-of-View (FOV)
- 500 MHz IBW (1 GHz Opt.)
- -80 dBm Sensitivity



Mission Configuration Page

MFEL-5000 UAS (R-ESM System)

Features:

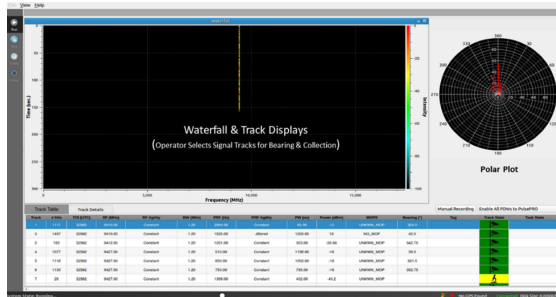
- 4-Element Spiral Antenna Array
- 21 lbs & 150W Power Consumption
- 2-18 GHz Coverage
- 360° Field-of-View (FOV)
- ≈ 5° DF Accuracy
- Bearing with Every Pulse
- -75 dBm Sensitivity
- Signal Tracks & Emitter ID



4-Spiral Array with GPS



Receiver & Processor Inside



Operator Display with Waterfall, Track Table and Polar Plot Display

MFEL-5000 GSN (ELINT System)

Features:

- OMNI & Spinning DF Antennas
- 0.5-18 GHz Coverage
- 360° Field-of-View (FOV)
- ≈ 2° DF Accuracy
- -100 dBm Sensitivity
- Signal Tracks & Emitter ID
- High Fidelity ELINT Recording



ACU

Receiver

CLK-15

Receiver

Server

Network Switch