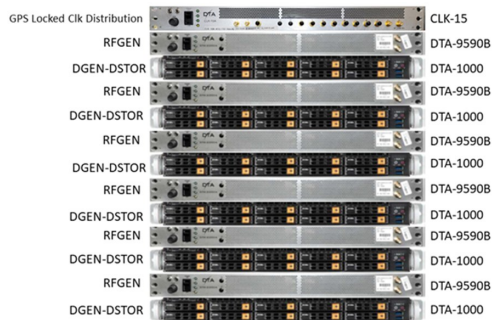


## EW Signal Generation for Test & Training

D-TA's approach of streaming complex baseband data (I/Q data streaming) from deep memories (computer hard drives) for wideband RF signal generation has created a paradigm shift in EW signal emulation for test and training.

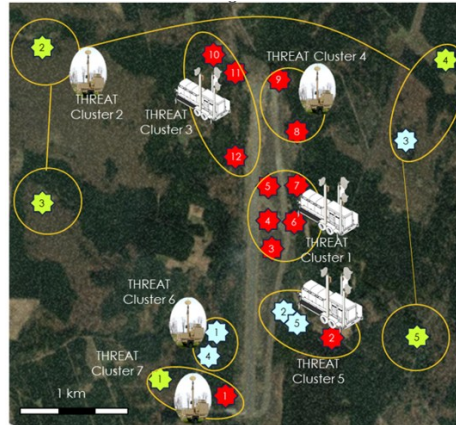
D-TA's concept is agnostic to signal types (radar, comms, interference and noise). Unlike legacy systems, which rely on streaming pulse descriptor words (PDWs), D-TA's approach does not suffer from signal drop-out problem.

Ultimately, this technique results in the ability to replicate a dense electromagnetic operational environment (EMOE), consisting of countless simultaneously present signals of different types. This allows the end-user to replicate training battlefields such as an integrated air defense system (IADS).



**Modular 6-Channel MRSE for Indoor Lab Testing (0 dBm output)**

## D-TA EW Emitter Products in Action



**THREAT2 Replicating an IADS for Advanced Pilot Training**



**PETS for Dockside Testing of Navy ESM**

D-TA Systems Inc.

2500 Lancaster Rd.  
Ottawa, ON, Canada  
K1B 4S5

Phone: 613-745-8713  
Fax: 613-745-1429  
E-mail: sales@d-ta.com



# EW Emitters for Test & Training

- Air Range Modernization
- Land Based Test Sites
- Naval Test Ranges



## Portable EW Threat Simulator (PETS) for Short Range Over the Air Test & Training

PETS is a rapidly deployable EW threat simulator for short range (<100 M) dockside or runway over-the-air testing of EW receivers for operational readiness validation.

At 12 GHz frequency, PETS can provide -50 dBm of radiated power at the skin of the target 100m away.

### Key Features:

- 0.5 – 18/40 GHz Frequency Range
- 500 MHz/1 GHz IBW
- 40+ dBm EIRP
- Unlimited Emitter Density per RF Band
- Resilient Dual-ridged Horn Antenna
- MilSpec 5m Tripod Mast
- 24TB Player/IQ Data Server
- Rugged Transit Cases
- Set up in 30 mins.



PETS Installed on a Mast for Mobility.

## PETS+ Signal Emulator for Long Range Test & Training

PETS+ is an enhanced version of PETS, ideal for long range (100 Km+) EW test and training.

PETS+ includes a high-power solid-state amplifier, positioner and a high-gain reflector antenna, all mounted up-mast to reduce RF cable losses.

The PETS+ system can provide 1 MW EIRP (90 dBm).



PETS+ Installed on a Trailer for Mobility.

## THREAT2 IADS Replication (Theatre Replication for Advanced Test & Training)

A collection of PETS+ system, each installed on a mobile trailer, can provide exceptional replication of Integrated Air Defence System (IADS) for air combat training. Typically, IADS includes layers of emitters with military, airport and urban environments. The mobile THREAT2 nodes are signal-type agnostics and can create virtually unlimited emitter density with no signal drop-out for replication of IADS.

Mobility makes the solution rapidly reconfigurable for realistic air-combat training.

